

**DURABILITY**

**REPEATABLE RESULTS**

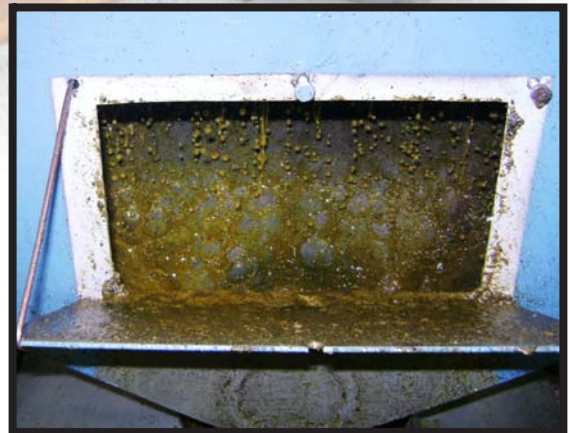
# Introducing the Anderson 8" Dox/Hivex™ Series Expander

High Oil Content Seed Capacities, From 30-65 MTPD

This new Anderson Dry Dox/Hivex™ Expander reduces oil content to 19-25% R.O. and efficiently shears the oil cells to increase Expeller® capacities 40-100%.

## Features:

- Oil Drainage Cage
- Anderson Expeller® Shafts
- V-Belt Drive
- Manually Operated Choke
- VFD Driven Feeder



**ANDERSON**  
INTERNATIONAL CORP

4545 Boyce Parkway, Stow, Ohio 44224 U.S.A.  
Phone: (216) 641-1112 • Fax: (330) 688-0117  
Web Site: <http://www.andersonintl.net>

Contact us today to learn more about how this unique oilseed processing machinery can benefit your current or future requirements.



An ISO 9001:2008 with Design  
Certified Company

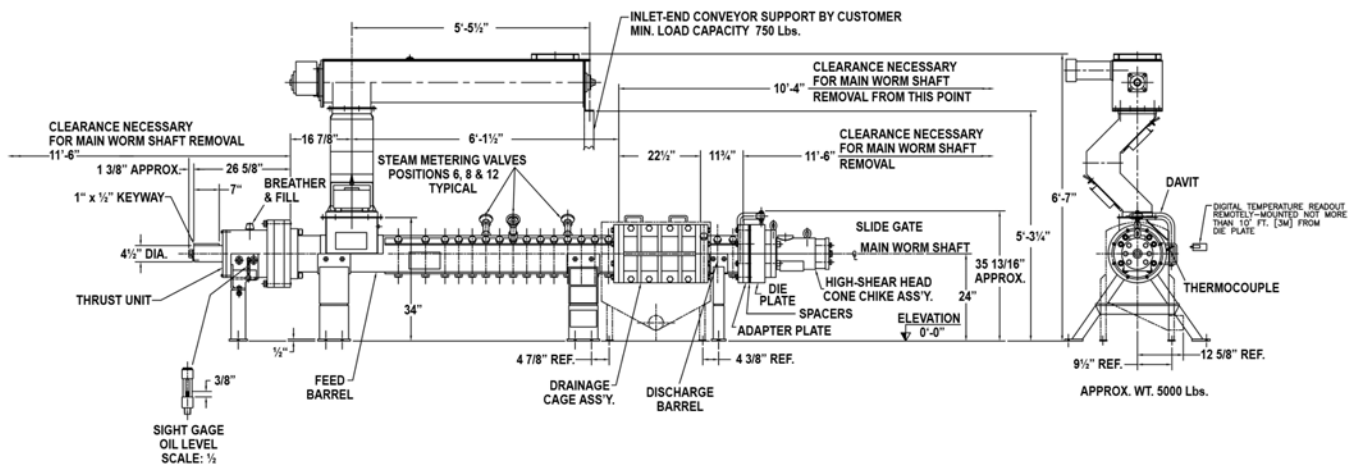
# Anderson Specifications

Application..... 8" Dox/Hivex™ Oilseed Preparation  
 Horizontal Drive: 200 HP, 170 rpm  
 Horizontal Barrel: 22" x 8" I.D. (559 mm x 203 mm)  
 L/D Ratio: 12  
 Total Drainage Area: 553 square inches (3,565 cm<sup>2</sup>)  
 Overall Length: 15' - 0" (4,572 mm)  
 Height: 3' - 7" (1,092 mm excluding feeder and feed chute)  
 Width: 40" (1,016 mm)  
 Approximate Weight: 5,000 Lbs. (2,268 kg)  
 Export Gross Weight: 6,000 Lbs. (2,721 kg)  
 Export Volume: 200 cubic feet (5.6 cubic meters)  
 Maximum Connected Power: 200 HP  
 Maximum Power Consumption: 180 HP nominal (135 KW)  
 Feed Rate: Rates given in metric tons per day, see table below.  
 Residual Oil: See table below.

## 8" Dox/Hivex™ Capacities

Oilseeds	Feed Rate	Residual Oil
Canola	50-60 MT/D	21-24%
Cotton Seeds	50-60 MT/D	21-24%
Flax Seeds	50-60 MT/D	21-24%
Safflower	55-65 MT/D	21-24%
Whole Sunflower	50-60 MT/D	21-24%

Many materials not listed above can also be processed. Contact Anderson International for details.



Anderson International Corp, 4545 Boyce Parkway, Stow, Ohio 44224 U.S.A.  
 Phone: (216) 641-1112 FAX: (330) 688-0117 Web Site: <http://www.andersonintl.net>