

DURABILITY

REPEATABLE RESULTS

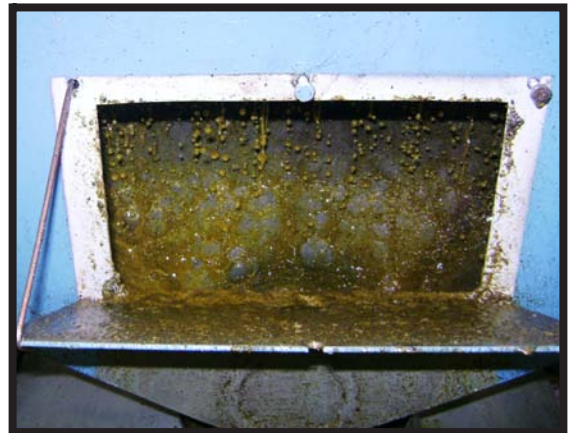
Introducing the Anderson 12" Hivex™ Series Expander



This new Anderson Hivex™ processes high oil content seeds at 450-500 MTPD and can also process soybeans up to 2500 MTPD. It reduces oil content to 25-30% R.O. in high oil seeds and efficiently shears the oil cells to increase extractor capacities 25-50%.

Features:

- **Oil Drainage Cage**
- **Anderson Expeller® Shafts**
- **VFD Main Drive**
- **Hydraulically Operated Choke**
- **VFD Driven Feeder**



ANDERSON
INTERNATIONAL CORP

4545 Boyce Parkway, Stow, Ohio 44224 U.S.A.
Phone: (216) 641-1112 • Fax: (330) 688-0117
Website: <http://www.andersonintl.net>

Contact us today to learn more about how this unique oilseed processing machinery can benefit your current or future requirements.



An ISO 9001:2008 with Design
Certified Company

Anderson Specifications

Application.....12" Hivex™ Oilseed Preparation

Horizontal Drive: up to 500 HP, 170 rpm

Horizontal Barrel: 16" x 12" I.D. (4,877 mm x 305 mm)

L/D Ratio: 12/1

Total Drainage Area: 1660 square inches (10,696 cm²)

Overall Length: 24' - 7" (7,493 mm)

Height: 4' - 1" (1,245 mm excluding feeder and feed chute)

Width: 40" (1,016 mm)

Approximate Weight: 9,500 lbs. (4,308 kg)

Export Gross Weight: 10,500 lbs. (4,762 kg)

Export Volume: 400 cubic feet (11.2 cubic meters)

Maximum Connected Power: 500 HP (375 KW)

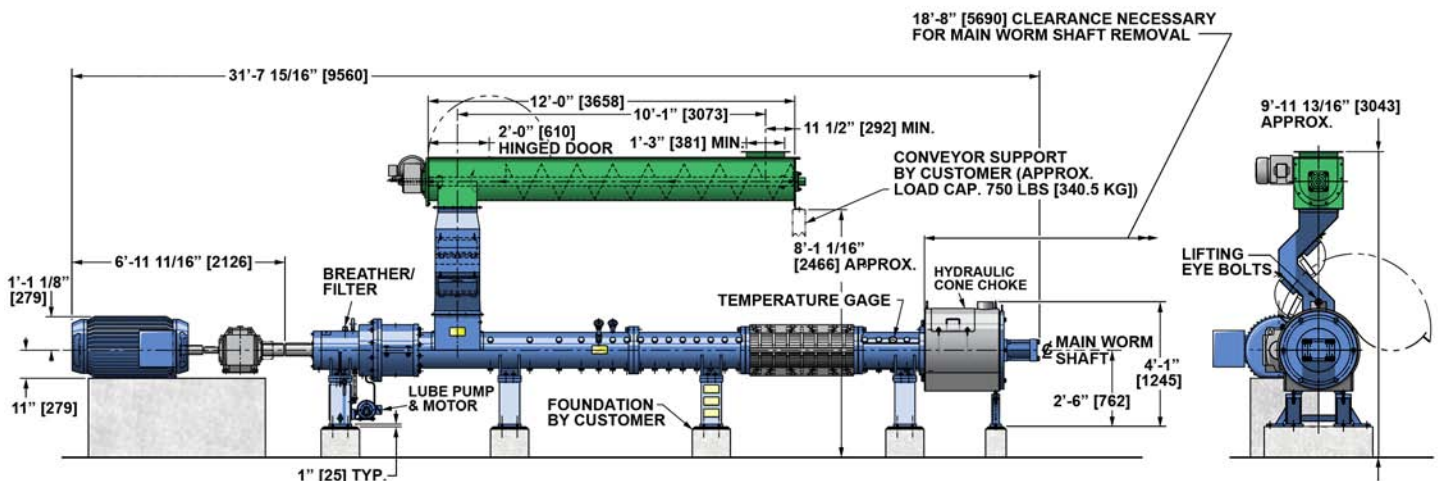
Feed Rate: Rates given in metric tons per day, see table below

Residual Oil: See table below

Hivex™ Capacities

Oilseeds	Feed Rate	Residual Oil
Canola	350-450 MT/D	27-30%
Cotton Seeds	800-1,500 MT/D	21-24%
Flax Seeds	350-450 MT/D	27-30%
Safflower	400-500 MT/D	25-28%
Whole Sunflower	400-500 MT/D	25-28%
Soybeans	1,000-2,200 MT/D	20-22%

Many materials not listed above can also be processed. Contact Anderson International for details.



Anderson International Corp, 4545 Boyce Parkway, Stow, Ohio 44224 U.S.A.
 Phone: (216) 641-1112 FAX: (330) 688-0117 Website: <http://www.andersonintl.net>